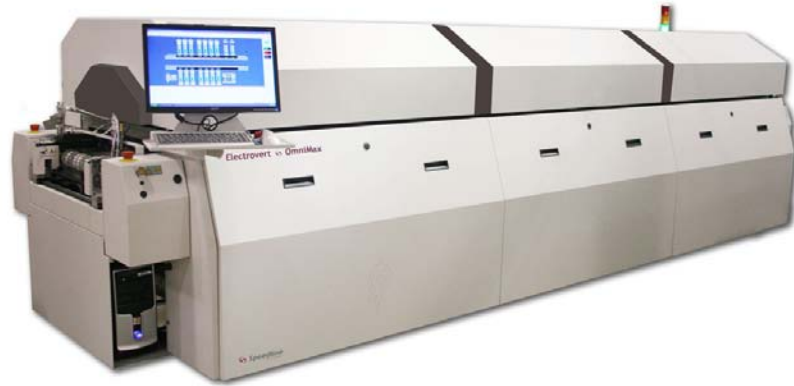
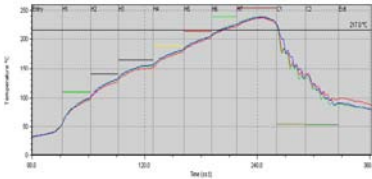


The OmniMax reflow soldering system is designed to deliver maximum thermal performance combined with process capability and control.



IsoThermal™ Chamber Technology

The OmniMax reflow soldering system is designed to deliver maximum thermal performance combined with process capability and control. The OmniMax incorporates an advanced, efficient, IsoThermal Chamber Technology (ICT) designed for maximum performance. Electrovert's innovative approach to thermal transfer delivers highly efficient heat transfer throughout the entire process. The consistent thermal performance of the OmniMax minimizes cross board ΔT 's and allows for tight control of time above liquidus (TAL). In addition, independent closed-loop blower speed control promotes thermal performance stability.

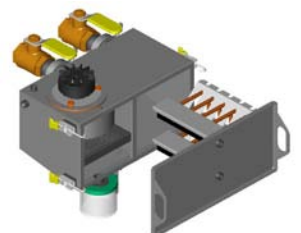
In a reflow oven, consistent thermal capability and control within the heated length is what matters most - not the number of zones. The OmniMax uses a dual IsoThermal chamber approach that produces ΔT 's less than $\pm 2^\circ\text{C}$ within 7 and 10 zone ovens (air or nitrogen). On thermally challenging heavily populated PCB's, the OmniMax outperformed competitive 8, 9, 11, and 12 zone ovens in thermal capability, control, and energy consumption.

Innovative Cooling Technology

- Air flow dynamics within cooling zones are efficiently controlled for a balanced environment and reduced exhaust temperatures
- An industry first with dripless cooling significantly reduces the potential for flux dripping in the cooling area
- Excellent separation between the heating and cooling areas produces tight control of TAL
- Enhanced nitrogen cooling design achieves maximum airflow balance and reduces nitrogen consumption by 20 to 25%

Maintenance Reduction Technologies

- Patent-pending dripless cooling design extends maintenance in the cooling section and easy to clean
- Intelligent Flux Control (IFC) advanced flux management system that incorporates self-clean features and allows for full maintenance during production
- Full accessibility to all major assemblies is accomplished through removable panels (front and back)



WORLD HEADQUARTERS

16 Forge Park, Franklin, MA 02038
Tel: (508) 520-0083
Fax: (508) 520-2288

www.speedlinetech.com

MANUFACTURING AND CUSTOMER SUPPORT FACILITIES

ACCEL/ELECTROVERT
3879 South State Highway 5
Camdenton, MO 65020
Tel: (573) 346-3341
Fax: (573) 346-5554

CAMALOT/MPM

16 Forge Park, Franklin, MA 02038
Tel: (508) 520-0083
Fax: (508) 520-2288

SALES AND CUSTOMER SUPPORT OFFICES

MEXICO
Carretera Base Aerea #5850
Km. 5, Edificio 11
Zapopan, Jalisco, Mexico
Tel: +52 (3) 818-9017
Fax: +52 (3) 818-9816

EUROPE

Speedline Technologies GmbH
Im Geferth 14
D-63303 Dreieich, Germany
Tel: +49 (0) 6103-8320
Fax: +49 (0) 6103-832-299

ASIA/PACIFIC

Speedline Technologies Asia Pte Ltd
132 Joo Seng Road, #03-01 Uniplus Bldg
Singapore 368358
Tel: +65-6286-6635
Fax: +65-6289-9411

© 2010 Speedline Technologies. All rights reserved. Covered by patent rights issued and/or pending.

OmniMax, IsoThermal Chamber Technology, Intelligent Flux Control, OmniCheck, Speedline, Electrovert, Accel, Camalot, MPM, and Protect are trademarks of Speedline Technologies or its affiliates and subsidiaries. Windows is a registered trademark of Microsoft Corporation.

001 04/10



Knowledge in process

Versatile Conveyor System

- Standard conveyor system supports a 20" (508 mm) process width
- Linear guides and precision screw shafts ensure a smooth motion and highly repeatable conveyor width
- Width adjust encoders continually track movement
- Center Board Support (CBS) option
- 35 mm Dual Track (SMEMA) option



High-End Features

- User-friendly Windows®-based user interface with expanded data logging capabilities
- Common PC and I/O system with wave and cleaner products
- Independent closed-loop blower control (heating and cooling)
- OmniCheck™ continuous monitoring and verification feature
- The OmniMax offers a comprehensive list of features that support demanding production requirements



OMNIMAX SPECIFICATIONS

	OMNIMAX 7	OMNIMAX 10
Machine Length	4863 mm (191.5")	6439 mm (253.5")
Machine Width	1367 mm (53.8")	1367 mm (53.8")
Machine Height	1241 mm (48.9")	1241 mm (48.9")
Process Width	508 mm (20")	508 mm (20")
Heated Length	2685 mm (105.7")	3855 mm (151.8")
Cooling Length	887 mm (34.9")	1293 mm (50.9")
Operating Temperature	350 °C (662 °F)	350 °C (662 °F)
Compliance Requirement	CE/UL Listing	CE/UL Listing

ABOUT SPEEDLINE TECHNOLOGIES

Speedline Technologies is the global leader in process knowledge and expertise for the PCB assembly and semiconductor industries. Based in Franklin, Massachusetts, U.S.A., the company markets five best-in-class brands — Accel microelectronics cleaning equipment; Camalot dispensing systems; Electrovert wave soldering, reflow soldering, and cleaning equipment; MPM stencil and screen printing systems; and Protect global services, support, and training solutions. For more information, visit us at www.speedlinetech.com.

Speedline Technologies maintains an ongoing program of product improvement that may affect design and/or price. We reserve the right to make these changes without prior notice or liability.