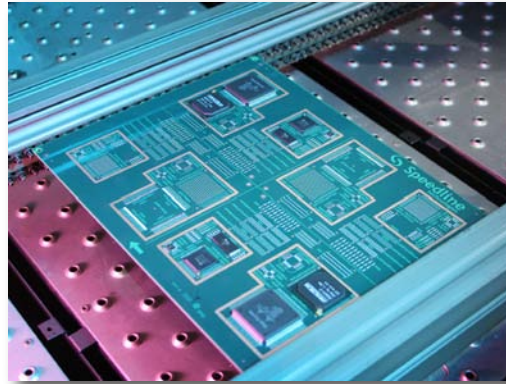


The OmniCheck monitoring system delivers cost-effective, continuous verification of process temperatures and conveyor speed for Electrovert OmniMax[™], OmniES[™], OmniExcel[™], OmniFlex[®], and OmniFlo[®] reflow soldering systems.



Continuous Reflow Process Monitoring and Verification

The OmniCheck provides continuous monitoring and verification of process parameters in both heating and cooling zones, and conveyor speed of the reflow oven. This tool offers redundancy to the machine's standard control system, yet is 100% integrated into machine software. The immediate benefit of the OmniCheck is having onboard redundant measurement capability to validate critical process parameters. Over the long term, the OmniCheck can serve as a tool to reduce the need for periodic profiling. OmniCheck provides continuous, integrated assurance that critical process parameters remain within specification.

Because the thermal sensor is strategically placed in close proximity to processed boards, the OmniCheck detects the smallest thermal changes that may occur in the reflow oven. The OmniCheck assures quality of processed assemblies by comparing actual process temperature and conveyor speed to the oven's initial performance. The monitoring function is continuous; therefore time consuming periodic thermal profiling can be drastically reduced. Through a reduction in performing timely weekly profile verifications, some customers have reported a feature payback of less than six months.

The OmniCheck system includes a dedicated thermal probe, with thermocouples located in each heating and cooling zone, and an independent conveyor speed encoder. Communication is direct to the reflow operating system software via an Ethernet link. Process data can be accessed and monitored quickly and easily on a single screen. The redundant parameter measurements have user-configurable process bands, thermocouple offsets and comprehensive alarm functions that are integrated into the machine software. This allows soft, acknowledge, ignore or hard-stop alarms on the machine and connecting conveyor systems. The benefit is the thermal performance of the machine is virtually defect-free.

The OmniCheck features a user-friendly configuration and set-up menu. Each recipe can be automatically transferred to the OmniCheck monitoring system with the additional possibility of process parameters and alarm setting adjustment. Each time a recipe is loaded into the system, the OmniCheck will also load and become operative with no extra effort.



WORLD HEADQUARTERS

16 Forge Park, Franklin, MA 02038
Tel: (508) 520-0083
Fax: (508) 520-2288

www.speedlinetech.com

MANUFACTURING AND CUSTOMER SUPPORT FACILITIES

ACCEL/ELECTROVERT
3879 South State Highway 5
Camdenton, MO 65020
Tel: (573) 346-3341
Fax: (573) 346-5554

CAMALOT/MPM

16 Forge Park, Franklin, MA 02038
Tel: (508) 520-0083
Fax: (508) 520-2288

SALES AND CUSTOMER SUPPORT OFFICES MEXICO

Carretera Base Aerea #5850
Km. 5, Edificio 11
Zapopan, Jalisco, Mexico
Tel: +52 (3) 818-9017
Fax: +52 (3) 818-9816

EUROPE

Speedline Technologies GmbH
Im Gefierth 14
D-63303 Dreieich, Germany
Tel: +49 (0) 6103-8320
Fax: +49 (0) 6103-832-299

ASIA/PACIFIC

Speedline Technologies Asia Pte Ltd
132 Joo Seng Road, #03-01 Uniplus Bldg.
Singapore 368358
Tel: +65-6286-6635
Fax: +65-6289-9411

© 2010 Speedline Technologies. All rights reserved.

OmniCheck, OmniMax, OmniES, OmniExcel, OmniFlex, OmniFlo, Speedline, Electrovert, Accel, Camalot, MPM, and Protect are trademarks of Speedline Technologies or its affiliates and subsidiaries. Windows is a registered trademark of Microsoft Corporation.

002 08/10



Data Logging Feature

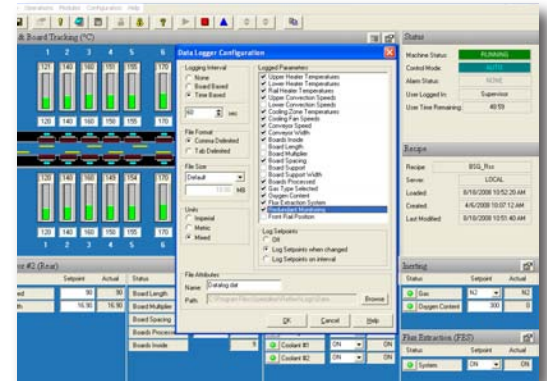
Enable the extensive data logging feature to capture OmniCheck data for later review. Data logging will log all system set points, actual, and process data into a user specified file. For security, the entire system is password protected.

Combining the OmniCheck, data logging, and optional barcode reader allows the user to log process parameters, resulting in the highest level of production traceability.

Availability

The OmniCheck is available as an option on Electrovert OmniMax and OmniES 7 and 10 zone reflow soldering systems equipped with single and dual track conveyors. The OmniCheck is also available as a field upgrade on OmniFlex, OmniExcel, OmniMax, OmniES and OmniFlo systems*.

*Datalogging feature is available on OmniMax, OmniES, OmniExcel and OmniFlex systems only.



OmniCheck Features

- Low-cost method to monitor process parameters
- Redundant temperature and conveyor speed check
- Eliminates the need for periodic profiling
- Easy recipe set-up with comprehensive integrated alarm functions
- Data logging capability

ABOUT SPEEDLINE TECHNOLOGIES

Speedline Technologies is the global leader in process knowledge and expertise for the PCB assembly and semiconductor industries. Based in Franklin, Massachusetts, U.S.A., the company markets five best-in-class brands – Accel microelectronics cleaning equipment; Camalot dispensing systems; Electrovert wave soldering, reflow soldering, and cleaning equipment; MPM stencil and screen printing systems; and Protect global services, support, and training solutions. For more information, visit us at www.speedlinetech.com.

Speedline Technologies maintains an ongoing program of product improvement that may affect design and/or price. We reserve the right to make these changes without prior notice or liability.