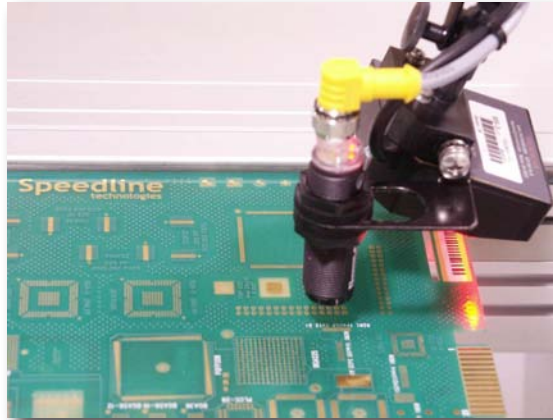


Maximize productivity
and process accuracy
with the advanced
features of the OmniMax
and OmniES barcode
scanning system.



Recipe Changeover for High Product Mix and Traceability

The barcode scanning system offers the ability to maximize productivity, process control and traceability with an advanced set of features. Available on the OmniMax and OmniES reflow soldering systems, this option can be configured with either the combo 2D/1D reader or the standard 1D reader. Fully integrated into the machine software, the barcode scanning system offers automated recipe control in a flexible, intuitive design.

The barcode reader is mounted to a flexible control arm and can be located over upstream conveyor systems. Barcode set-up software provides the capability to configure the reader in the production environment using actual barcodes, thus maximizing productivity and ensuring process accuracy.

Special Features:

- *Recipe Changeover* – Automated control of the machine can be as simple as scanning a barcode. This system allows pallets/PCBs into the machine if the barcode scanned is associated with the current recipe; otherwise the board can be stopped using the “Ready to Upstream” SMEMA signal. Once all previous PCBs exit the machine, the new recipe is automatically loaded and restarted. After the new process settings are achieved, the “to Upstream” signal is given and the pallet is allowed to enter the machine.
- *Recovery Wizard* – provides several options in the event of an invalid barcode scan. The recovery wizard is more than just an alarm. The operator can associate the invalid barcode to the current recipe allowing the board to enter the machine, or assign it to a different recipe. For added functionality, the correct barcode may be typed in manually. The board can be processed under the current recipe or manually removed from the conveyor.



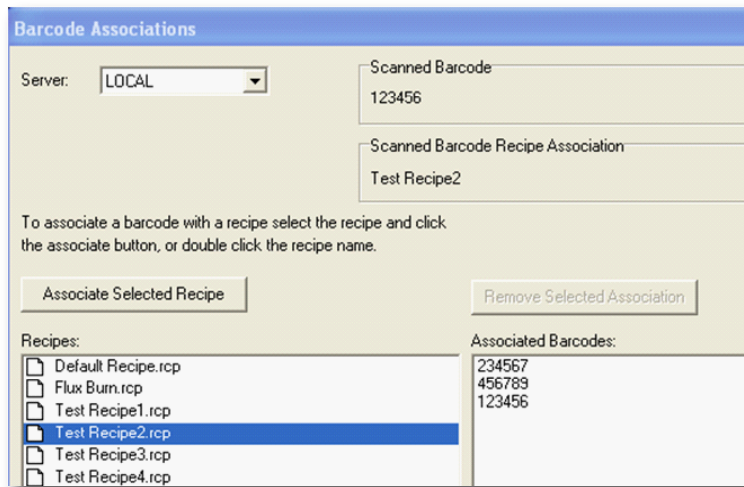
2D/1D Combo Reader



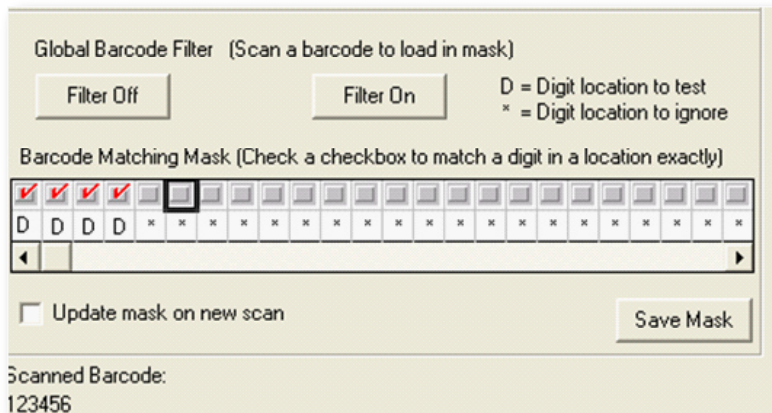
1D Reader

Special Features:

- *Barcode Association* – allows several barcodes to be associated with a single recipe. It's as easy as scanning a barcode while the recipe is selected and clicking the associated recipe button. If the barcode is already assigned to another recipe, an alarm message will appear and various options will be provided, including the removal of the previous association and addition of the new.



- *Barcode Filter/Mask* – Often a series of boards will have a barcode that includes many of the same characters. The remaining characters may differentiate individual boards or pallets. To simplify recipe association, a portion of the barcode can be selected for recipe detection, ignoring the remaining characters for this process only. For data logging purposes, however, the entire barcode is stored.



WORLD HEADQUARTERS

16 Forge Park, Franklin, MA 02038
Tel: (508) 520-0083
Fax: (508) 520-2288

www.speedlinetech.com

MANUFACTURING AND CUSTOMER SUPPORT FACILITIES

ACCEL/ELECTROVERT
3879 South State Highway 5
Camdenton, MO 65020
Tel: (573) 346-3341
Fax: (573) 346-5554

CAMALOT/MPM

16 Forge Park, Franklin, MA 02038
Tel: (508) 520-0083
Fax: (508) 520-2288

SALES AND CUSTOMER SUPPORT OFFICES MEXICO

Carretera Base Aerea #5850
Km. 5, Edificio 11
Zapopan, Jalisco, Mexico
Tel: +52 (3) 818-9017
Fax: +52 (3) 818-9816

EUROPE

Speedline Technologies GmbH
Im Gefierth 14
D-63303 Dreieich, Germany
Tel: +49 (0) 6103-8320
Fax: +49 (0) 6103-832-299

ASIA/PACIFIC

Speedline Technologies Asia Pte Ltd
132 Joo Seng Road, #01-03 Uniplus Bldg.
Singapore 368324
Tel: +65-6286-6635
Fax: +65-6289-9411

© 2010 Speedline Technologies. All rights reserved.

OmniMax, OmniES, OmniExcel, Speedline, Electrovert, Accel, Camalot, MPM, and Protect are trademarks of Speedline Technologies or its affiliates and subsidiaries. Windows is a registered trademark of Microsoft Corporation.

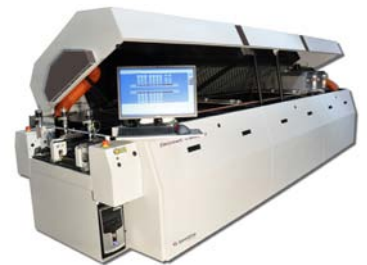
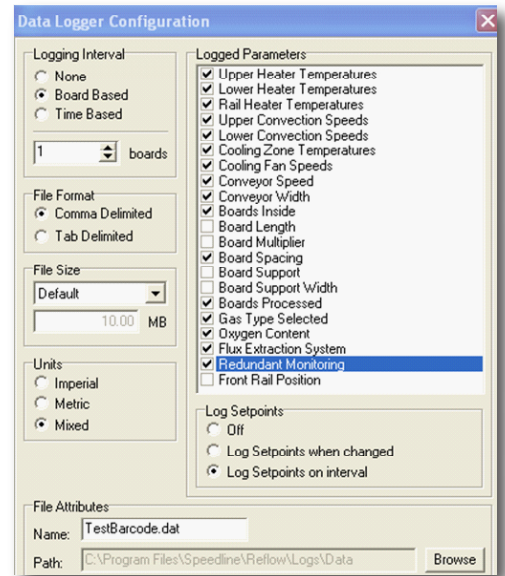
001 04/10

Special Features:

- **Data Collection** – Enable the data logging feature to capture the selected process (actual and set points) to be recorded to a file that is easily transferred to a spreadsheet or data collection program. The data log file is stored as a text file and includes the time and date stamp, recipe name, scanned barcode, and selected process values. The data can be collected on a time-based interval or as single snapshot for each board.
- **Recipe Change Flexibility** - The recipe change feature can be disabled for all recipes on the *Barcode Scanner Configuration* page or for a single recipe in the *Conveyor Operations* page. This feature enables the barcode for data collection, but leaves recipe control to the operator.

Availability

The barcode scanning system is available as an option on Electrovert OmniMax and OmniES 7 and 10 zone reflow soldering systems equipped with single and dual track conveyors. The barcode scanner is also available as a field upgrade on OmniMax, OmniES, and OmniExcel® systems.



Barcode Scanning System Features

- Automated recipe control
- Available in 1D or 2D/1D combo
- Accurate method of monitoring process parameters
- Provides easy recipe changeover and traceability

ABOUT SPEEDLINE TECHNOLOGIES

Speedline Technologies is the global leader in process knowledge and expertise for the PCB assembly and semiconductor industries. Based in Franklin, Massachusetts, U.S.A., the company markets five best-in-class brands – Accel microelectronics cleaning equipment; Camalot dispensing systems; Electrovert wave soldering, reflow soldering, and cleaning equipment; MPM stencil and screen printing systems; and Protect global services, support, and training solutions. For more information, visit us at www.speedlinetech.com.

Speedline Technologies maintains an ongoing program of product improvement that may affect design and/or price. We reserve the right to make these changes without prior notice or liability.